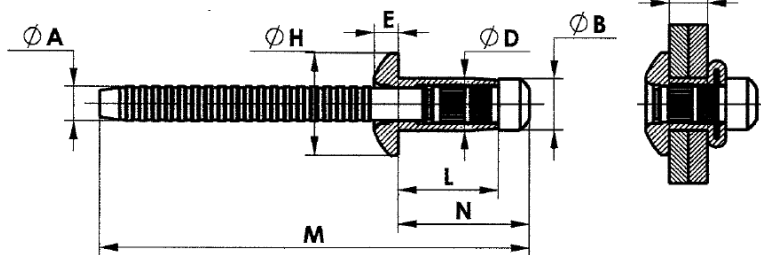


ORLOCK ALUMINIUM



Technical Data



SIZE	RIVET CODE	RIVET LENGTH L ± 0.3	GRIP RANGE G	A DIA. ± 0.07	B DIA. ± 0.06	D DIA. ± 0.06	E ± 0.2	H DIA. ± 0.3	M ± 2	N ± 0.5
3/16" 4.8mm	LH48090P	9	1.5-3.5	3.02	4.84	4.76	2.20	9.80	47	12.2
	LH48115P	11.5	3.5-6.0						49	14.7
	LH48140P	14.0	6.0-8.5						51	17.2
	* LH48165P	16.5	8.5-11.0						54	19.7
	* LH48190P	19.0	11.0-13.5						56	22.2

RIVET CODE	SHEAR STRENGTH, N/kgf	TENSILE STRENGTH, N/kgf
	nom.	nom.
LH48090P/ LH48190P	260	190

BODY MATERIAL	ALUMINIUM ALLOY-ALMG2.5(5052) / ALMG 3.5 (5154)
MANDREL MATERIAL	ALUMINIUM ALLOY 7075 OR EQUIVALENT
FINISH	BRIGHT FINISHED SURFACE
RECOMMENDED HOLE SIZE	4.9-5.1 mm

ORNIT
BLIND RIVETS
Fastening Solutions

ORNIT BLIND RIVETS
Tel: +972 8 6610222, Fax: +972 8 6611380
www.ornit.com